

Standard Ocean Container Specifications

Container sizes are for planning purposes only. Actual container specs may vary slightly by manufacturer.

20' Dry Container

Maximum Payload Wt.: 52,910 lbs / 24,000 kgs

Tare Weight: 4,960 lbs / 2,250 kgs

Capacity: 1,164 cu. ft.

Internal Dimensions

Length: 19' 2"

Width: 7' 6"

Height: 7' 8"



20' Open Top Container

Maximum Payload Wt.: 48,000 lbs / 21,773 kgs

Tare Weight: 4,960 lbs. / 2,250 kgs

Capacity: 1,164 cu. ft.

Internal Dimensions

Length: 19' 2"

Width: 7' 6"

Height: 7' 6"



20' Reefer Container

Maximum Payload Wt.: 44,500 lbs / 20,185 kgs

Tare Weight: 6,720 lbs / 3,048 kgs

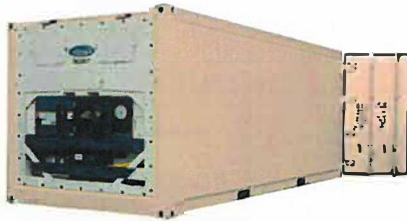
Capacity: 950 cu. ft.

Internal Dimensions

Length: 17' 10"

Width: 7' 6"

Height: 7' 5"



20' Flat Rack Container

Maximum Payload Wt.: 46,500 lbs / 21,092 kgs

Internal Dimensions

Length: 19' 6"

Width: 7' 3"

Height: 7' 2"



45' High Cube Dry Container

Maximum Payload Wt.: 62,350 lbs / 28,282 kgs

Tare Weight: 10,449 lbs / 4,740 kgs

Capacity: 3,037 cu. ft.

Internal Dimensions

Length: 44' 6"

Width: 7' 6"

Height: 8' 10"



40' Dry Container

Maximum Payload Wt.: 58,000 lbs / 26,309 kgs

Tare Weight: 8,330 lbs / 3,778 kgs

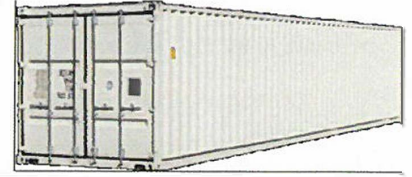
Capacity: 2,376 cu. ft.

Internal Dimensions

Length: 39' 1"

Width: 7' 6"

Height: 7' 8"



40' Open Top Container

Maximum Payload Wt.: 57,500 lbs / 26,082 kgs

Tare Weight: 8,400 lbs / 3,810 kgs

Capacity: 2,260 cu. ft.

Internal Dimensions

Length: 39' 1"

Width: 7' 6"

Height: 7' 8"



40' High Cube Container

Maximum Payload Wt.: 58,000 lbs / 26,309 kgs

Tare Weight: 8,860 lbs / 4,019 kgs

Internal Dimensions

Length: 39' 1"

Width: 7' 6"

Height: 8' 7"



40' Flat Rack Container

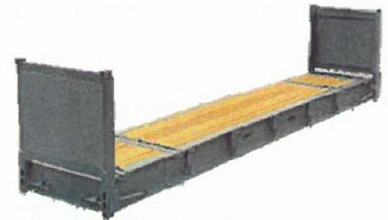
Maximum Payload Wt.: 57,500 lbs / 26,082 kgs

Internal Dimensions

Length: 39' 6"

Width: 7' 7"

Height: 6' 4"



53' Dry Container

Maximum Payload Wt.: 67,200 lbs / 30,482 kgs

Tare Weight: 12,478 lbs / 5,660 kgs

Capacity: 3,857 cu. ft.

Internal Dimensions

Length: 52' 5"

Width: 8' 2"

Height: 8' 11"



Call us today for a Quote 630-735-0150
or visit our website at junologistics.com

Standard Air Craft Container Specifications

Container sizes are for planning purposes only. Actual container specs may vary slightly by manufacturer.

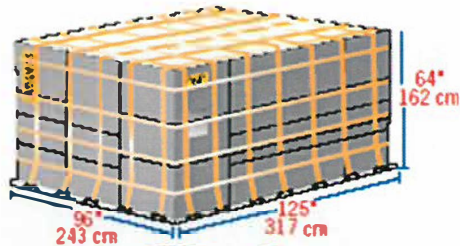
Main Deck Pallet - 96" Pallet

Equivalent to IATA Type 2BG

Maximum volume: 21.2 cu.m (747 cu.ft.)

Maximum gross weight: 6,804 kg (15000 lb)

Can be loaded to 96" (162 cm) and 118" (300 cm) on freighters



Main Deck Pallet - 88" Pallet

Equivalent to IATA Type 2

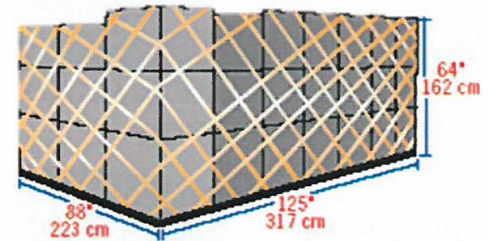
Maximum volume: 11.9 cu. m. (420 cu. ft)

Maximum gross weight: 747/DC-10: 6033 kg (13300 lb)

767: 5103 kg (11227 lb)

777/DC-10: 4626 kg (10501 lb)

Can be loaded to 96" (162 cm) and 118" (300 cm) on freighters



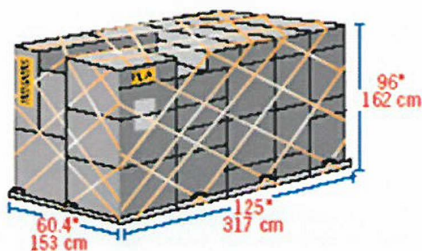
Lower Deck Pallet - Half Pallet

Equivalent to IATA Type 6

Maximum volume: 21.2 cu.m (747 cu.ft.)

Maximum gross weight: 6,804 kg (15000 lb)

Can be loaded to 96" (162 cm) and 118" (300 cm) on freighters



Lower Deck Pallet - 20' Pallet

Equivalent to IATA Type 1P

Maximum volume: 33.2 cu. m (1174cu. ft.)

Maximum gross weight: 11340 kg (25000 lb)

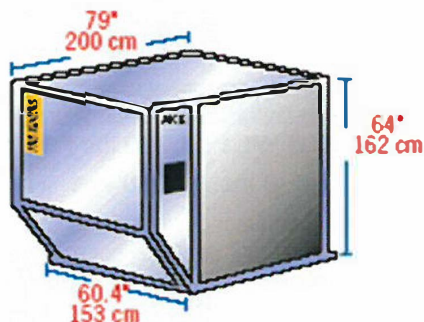


LD-3

Equivalent to IATA Type 8

Internal volume: 4.3 cu. m (152 cu. ft)

Maximum gross weight: 1588 kg (3500 lb)

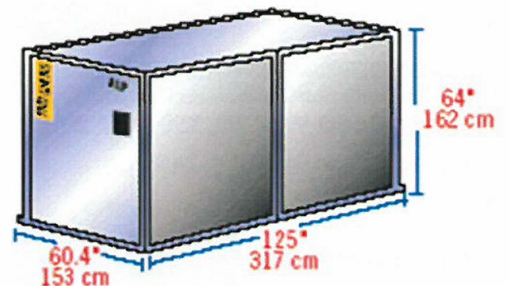


LD-11

Equivalent to IATA Type 6

Internal volume: 7.2 cu. m (253 cu. ft)

Maximum gross weight: 3176 kg (7002 lb)



Call us today for a Quote 630-735-0150

or visit our website at junologistics.com